



Asymmetrical Linen Kaftan Tutorial

Description





Choosing the fabric for your sewing projects is one of the most exciting parts! It is a chance to put your own personal spin on a design, experiment with patterned fabrics and choose colors that suit your style. And today's tutorial is all about that – playing with stripes and colors!

This beautiful linen kaftan with a scoop neckline and raglan sleeves features two different fabrics and plays with the direction of the stripes to create visual interest. For this project, we decided to pick two different fabrics from our [Premier Finish collection](#) that share the same color and weight, and pair stripes with neutrals for an easy vibe.

With this project, there are so many opportunities for color blocking, print mixing and other ways of playing with fabric. You could even go patchwork style and make every panel a different print in the same color. Explore your creativity and simply have fun!

Materials



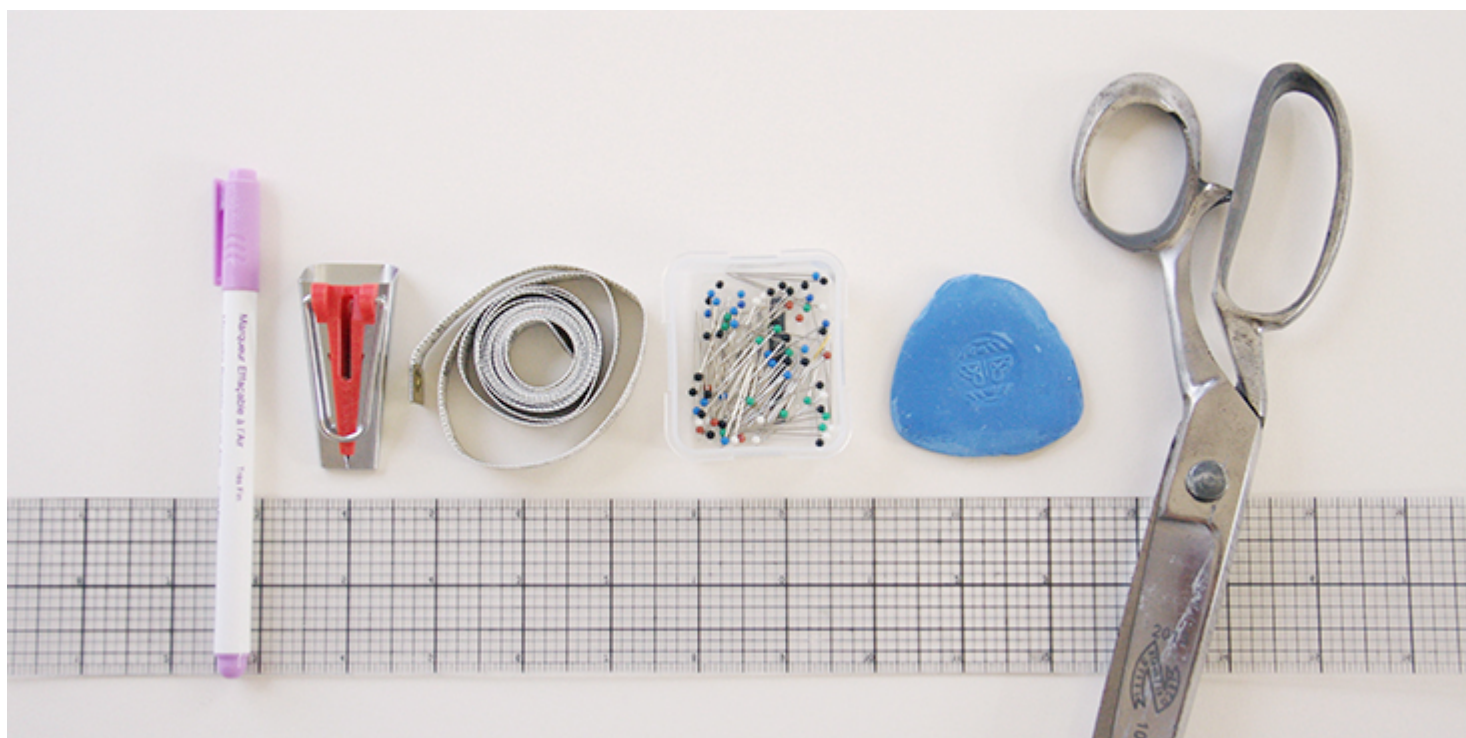
2 yards of [IL042 919 – FS Premier Finish – 100% Medium Weight Linen](#)

1/2 yard of [IL042 900 – FS Premier Finish – 100% Medium Weight Linen](#)

Matching sewing thread

Tools

Pattern paper, scissors, fabric marker, pins, ruler, measuring tape, 18 mm bias tape maker, sewing machine



Difficulty

Beginner

Time

5-6 hours

Pattern

You can access the pattern by following this link [HERE](#). Remember to add seam allowances as indicated in the pattern.

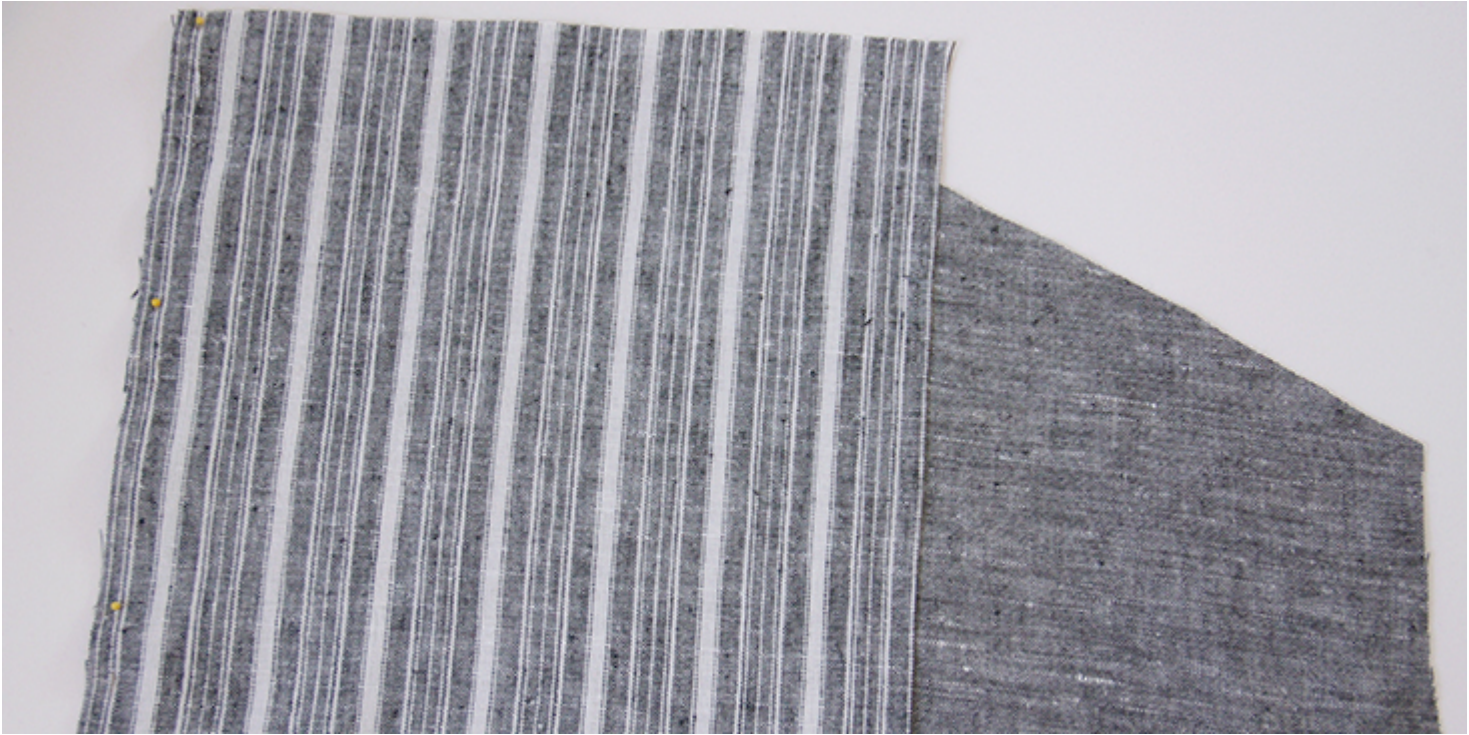
Note that you'll also need to make a strip of bias tape for the neckline binding and two 9,5 strips for sleeve cuffs. For detailed instructions on how to cut and make your bias tape please follow [this tutorial](#). We wanted to add a contrasting detail to the dress by cutting our bias tape in the same, plain grey fabric as the sleeve panels.

The best thing about this pattern is that since it's oversized, it will fit most of the sizes with smaller sizes wearing the dress more dramatically oversized.

Steps

Note: Prewash your fabric and tumble dry it until it is still slightly moist, dry in room temperature. Iron the fabric so it is easier to work with.

1. Let's start by assembling the two contrasting sleeve panels. Pin the bottom and the top of each sleeve right sides together.



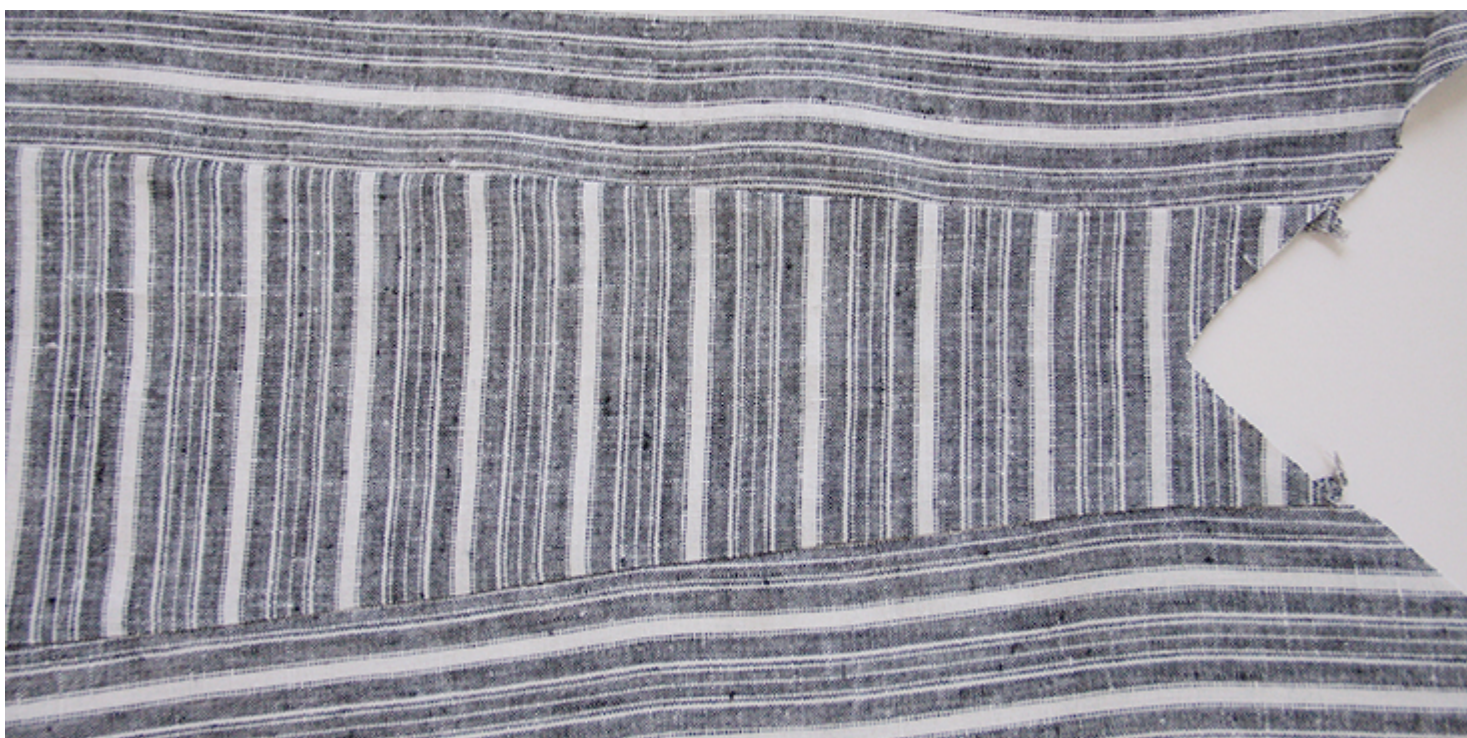
2. Sew at a $\frac{3}{8}$ (1 cm) seam allowance. Trim the seam allowance down to $\frac{1}{4}$ (6 mm) and serge or zigzag the raw edges together to prevent the fabric from fraying. Press the seams flat folding the serged/zigzagged edges towards the bottom of the sleeve.



3. Attach the horizontal side panels to the front and the back of your kaftan by pinning them right sides together.



4. Sew at a $\frac{3}{8}$ (1 cm) seam allowance. Trim the seam allowance down to $\frac{1}{4}$ (6 mm) and serge or zigzag the raw edges together to prevent the fabric from fraying. Press the seams flat folding the serged/zigzagged edges towards the horizontal side panel.



5. Pin the sleeve at the underarm right sides together to create a tube.



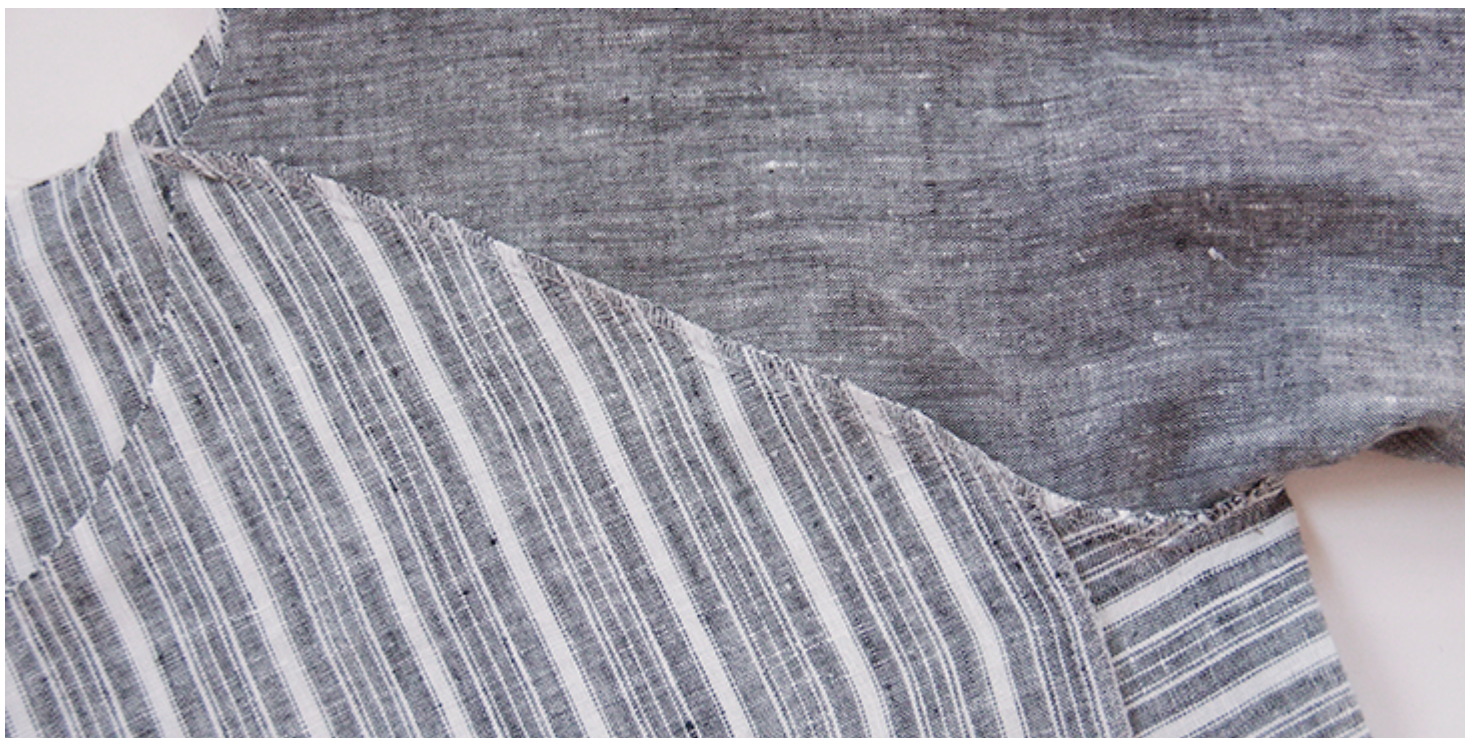
6. Sew at a $\frac{3}{8}$ (1 cm) seam allowance. Trim the seam allowance down to $\frac{1}{4}$ (6 mm) and serge or zigzag the raw edges together. Press the seams flat folding the serged/zigzagged edges to one side.



7. Attach the sleeves to the shoulder edges by pinning them to your assembled dress right sides together. Start at the underarm V and pin all around the front and the back shoulder edge. Note that the lower edge of the sleeve should be pinned to the front and the higher edge – to the back.



8. Stitch the sleeves to the bodice at a $\frac{3}{8}$ (1 cm) seam allowance. Trim the seam allowance down to $\frac{1}{4}$ (6 mm) and serge or zigzag the raw edges together to prevent the fabric from fraying. Press the seams flat folding the serged/zigzagged edges towards the sleeve panels.



9. The neckline is gathered and encased in the bias binding. So make a strip of bias tape 27 long by following [this detailed tutorial](#).

10. To gather the neckline, set your sewing machine to the longest stitch

setting and sew a gathering stitch all the way around the top of the kaftan 1/4 from the raw edge.



11. Pull on the bottom thread of the gathering stitch and pull on the fabric until it starts to gather up. Distribute the fabric evenly and secure the threads by making knots once the neckline looks like it is gathered enough to fit your head. Try it on and make necessary adjustments.



12. Take your bias tape, join the two ends right sides together to the measurement of your gathered neckline and pin it to the neckline “sandwiching” the gathered fabric. Use plenty of pins to make sure your neckline is seated correctly and place the seam at the center back.



13. Sew along the bottom edge of the bias binding (all layers at once) starting from the center back.



Give your finished neckline a light press, just to reduce the bulk but keeping the gathers intact.

14. Using the same method as in steps 10-13 to finish your sleeves. Or follow this [step-by-step tutorial](#) that explains how to sew gathered sleeves.

Use your two 9,5 bias tape strips as cuffs. To assemble these cuffs, unfold your tape, join the two ends right sides together and stitch.



Gather your sleeve opening to the length of your finished cuff and attach the cuffs.



15. Lastly, finish the bottom hem by folding and pressing the fabric twice to

the wrong side ($\frac{3}{8}$ to $\frac{1}{2}$) and stitch as close to the folded edge as possible.



Give your finished kaftan a good press and you're all done!

Discover your inner designer and choose your

own fabrics from [our plethora of linen!](#)

CATEGORY

1. SEWING PROJECTS
2. TUTORIALS

Category

1. SEWING PROJECTS
2. TUTORIALS

Date Created

August 22, 2017

Author

rima-khusainova